

## BROWNLEE MANAGEMENT, INC.

---

2112 MAIN STREET, BOX 480

EMMETSBURG, IA 50536

712-852-4617

FAX 712-852-3405

### PAPADAKES FARM 9-95-34

GROSS ACRES: 356.69

CROP ACRES: 344.92

CORN BASE: 316.10

PLC YIELD: 139

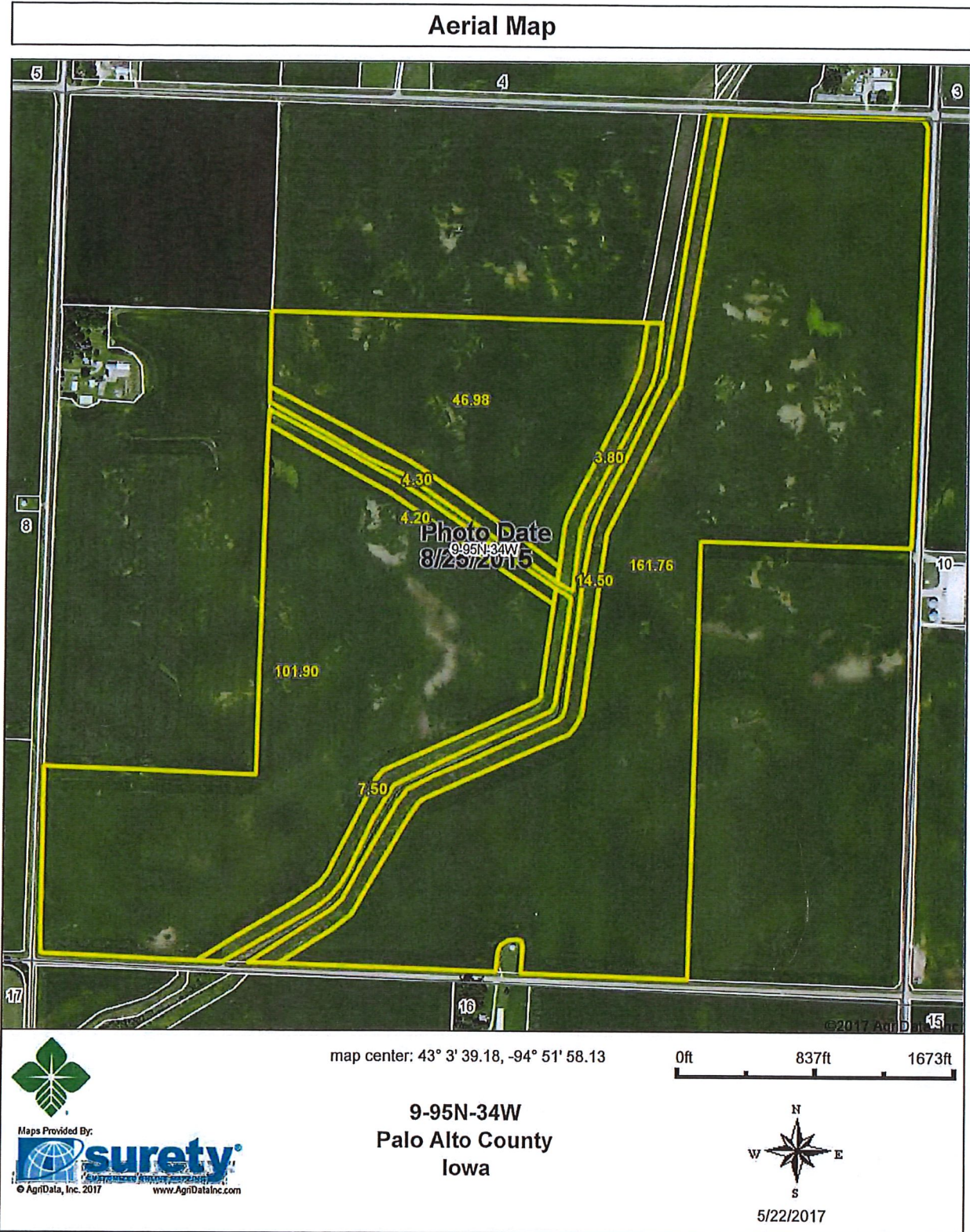
CSR1: 64.1

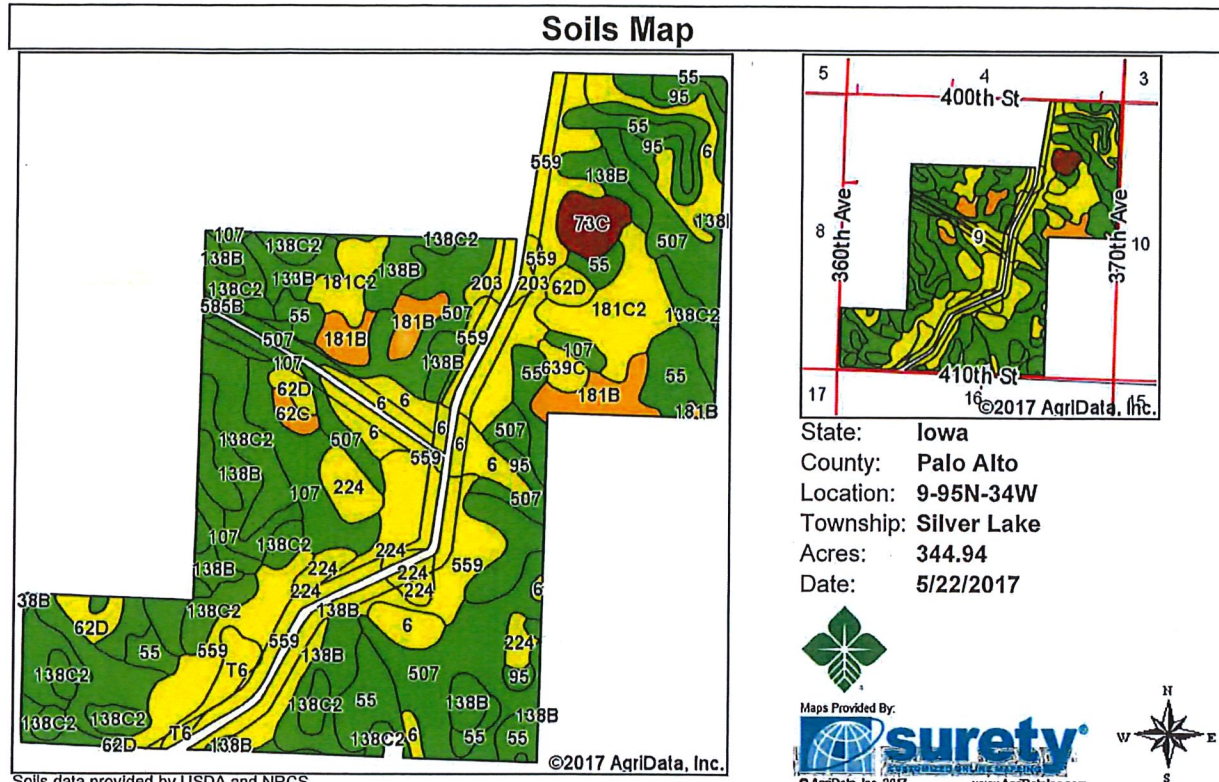
CSR2: 72.0

2017 CERTIFIED CORN ACRES: 320.3

CRP ACRES: 24.59 @ \$223.33/AC TO 2024

ASKING PRICE - \$2,622,000 / \$7600 PER CROP ACRE / \$7350 PER GROSS ACRE





Area Symbol: IA147, Soil Area Version: 22

Code	Soil Description	Acres	Percent of field	CSR2 Legend	Non-Irr Class *c	CSR2**	CSR
559	Talcot clay loam, deep, 0 to 2 percent slopes	57.21	16.6%		IIw	53	62
507	Canisteo clay loam, 0 to 2 percent slopes	50.30	14.6%		IIw	84	74
138C2	Clarion loam, 6 to 10 percent slopes, moderately eroded	36.31	10.5%		IIIe	83	58
55	Nicollet clay loam, 1 to 3 percent slopes	35.69	10.3%		Iw	89	84
138B	Clarion loam, 2 to 6 percent slopes	32.59	9.4%		IIe	89	76
107	Webster clay loam, 0 to 2 percent slopes	25.16	7.3%		IIw	86	79
6	Okoboji silty clay loam, 0 to 1 percent slopes	23.85	6.9%		IIIw	59	54
181C2	Clarion-Estherville complex, 5 to 9 percent slopes, moderately eroded	17.20	5.0%		IVe	49	38
181B	Clarion-Estherville complex, 2 to 6 percent slopes	11.93	3.5%		IIe	63	53
95	Harps clay loam, 0 to 2 percent slopes	10.29	3.0%		IIw	72	59
224	Linder loam, 0 to 2 percent slopes	10.15	2.9%		IIs	56	45
62D	Storden loam, 10 to 16 percent slopes, moderately eroded	6.29	1.8%		IVe	41	39
638B	Clarion-Swanlake complex, 2 to 6 percent slopes	6.02	1.7%		IIe	85	62
73C	Hawick gravelly sandy loam, 6 to 12 percent slopes	5.03	1.5%		IVs	31	5
133B	Colo silty clay loam, 2 to 4 percent slopes	4.21	1.2%		IIw	80	64
T6	Okoboji silty clay loam, benches, 0 to 1 percent slopes	3.97	1.2%		IIIw	55	54

203	Cylinder loam, 0 to 2 percent slopes	3.67	1.1%		lls	58	76
639C	Storden-Salida complex, 5 to 9 percent slopes	2.08	0.6%		llle	58	34
62C	Storden loam, 6 to 10 percent slopes, moderately eroded	1.61	0.5%		llle	64	48
585B	Colo-Spillville complex, 2 to 5 percent slopes	1.38	0.4%		llw	77	60
<b>Weighted Average</b>						<b>72</b>	<b>64.1</b>

\*\*IA has updated the CSR values for each county to CSR2.

\*c: Using Capabilities Class Dominant Condition Aggregation Method

Soils data provided by USDA and NRCS.

PAPADAKES

9-95-34

2 possible Wind Turbines  
\$30,000/YR

NORTH

